



# Similac® Probiotic Tri-Blend

## DIRECTIONS FOR PREPARATION AND USE



### Please follow your institution's guidelines for mixing protocols

## Directions for Preparation and Use

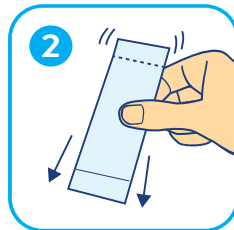
Proper hygiene, handling, and storage are important when preparing Similac Probiotic Tri-Blend.

**Suggested Use:** 1 sachet per day

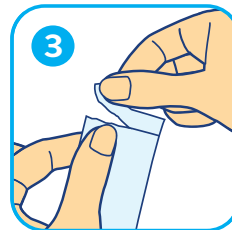
**Preparation:** Start preparation on a clean surface. Similac Probiotic Tri-Blend mixes easily with 3mL breast milk, donor milk, infant formula, sterile water or 5% glucose water (commercially sterile).



Pour 3 mL breast milk, donor milk, infant formula, sterile water or 5% glucose water (commercially sterile) into disposable mixing container



Gently shake sachet to ensure contents are settled to bottom



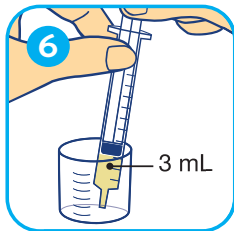
To open sachet, tear top off completely along perforation



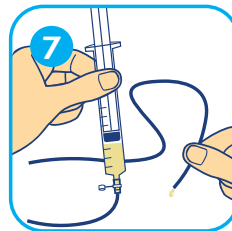
Slowly add 1 sachet of Similac Probiotic Tri-Blend powder to mixing container



Using a single-use oral syringe, gently swirl until uniformly distributed



Draw up contents from container into syringe



Administer with oral syringe; mixed product also flows easily through feeding tube



Administer mixed product within 60 minutes

**Storage:** Store sachets unopened at or below 25°C (77°F). Use immediately once sachet is opened.

**Warning:** Do not warm mixed product beyond 37°C (98.6°F).

Similac Probiotic Tri-Blend is a dietary supplement and should be mixed with a small volume as directed (3 mL) and given separately rather than mixed with a full feeding or fortified feeding to ensure the entire dose is received.

**USE BY DATE ON BOTTOM OF CARTON**

Similac Probiotic Tri-Blend should be mixed outside of patient areas.

A small amount of sediment is normal. Gently shake to resuspend.